



# BETTER. NATURALLY.

2017 Recreation Surfaces Catalog



**Engineered for Safety,  
Accessibility, Easy  
Maintenance, Durability  
& Greater Value**





## BETTER. NATURALLY.

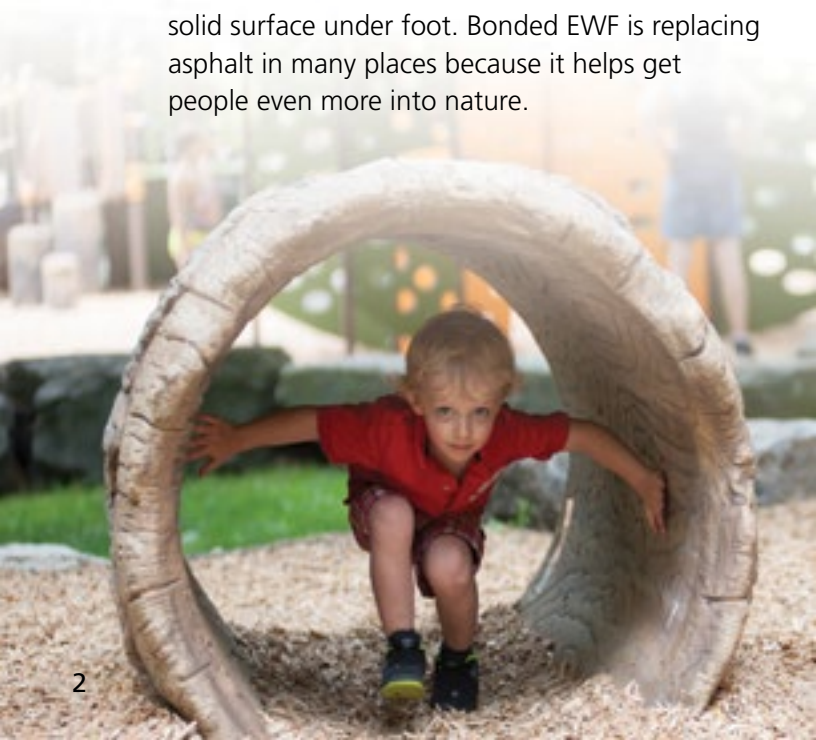
**ZEAGER developed the original Engineered Wood Fiber (EWF) product and was the first to produce it for recreation surfacing applications throughout North & Central America.**

### For Playgrounds & Play Areas

EWF is processed wood free of twig and leaf material, ground to a fibrous consistency and randomly-sized. It is not chemically treated and is entirely natural. When it is spread and settled, it forms a knitted layer that reduces movement from use. It maintains its cushiony properties for the life of the playground, provided the depth is maintained by occasional top-offs. EWF is pervious and does not decompose as quickly as mulch does.

### For Trails, Pathways & Gathering Areas

Bonded EWF is the same processed material that is then mixed with specially-formulated binders on site, poured and tamped into place. It's become a highly desirable trail surface for parks, natural areas, historic sites and campgrounds because of its appearance and ease of mobility for wheelchairs and walkers who benefit from a solid surface under foot. Bonded EWF is replacing asphalt in many places because it helps get people even more into nature.



## THE ZEAGER STORY IS ALSO THE ENGINEERED WOOD FIBER STORY.

**We simply know wood more than any other EWF producer, which translates into delivering a better and more consistent product.**

Our hands-on knowledge comes from growing and harvesting timber, processing and de-metaling it, coloring, storing, installing, inspecting and testing it. With that depth of experience, we're able to spot and solve issues before they become problems. We're also able to innovate and offer valuable improvements.

**We source the wood ourselves, ensuring quality is at the core of every EWF product we deliver.**

Maintaining standards in quality and consistency is always a challenge when you're dealing with natural products like wood. Because of our deep knowledge and broad experience, we've developed – and maintained – an industry reputation of doing just that: providing a better quality product and consistent specification.

**We developed and secured approval for a radically different playground surfacing product, which changed – for the better – the industry forever.**

A mid-90s ADA-related lawsuit that involved another company's product started our team on a pioneering path that would lead to overcoming the accessibility challenge for playground surfacing with what is known today as Engineered Wood Fiber (EWF).

The industry once again turned to Zeager to help improve playground surfacing safety. Working with the American Society for Testing and Materials (ASTM) and the U.S. Consumer Product Safety Commission (CPSC), our team helped establish standards for EWF and certification from International Play Equipment Manufacturers Association (IPEMA). Soon after, we were asked to work with the USDA Forest Products Research Lab in the development of a "stabilized" Engineered Wood Fiber to further improve accessibility for play & recreation.



**With three quarters of all playgrounds in the U.S. using some form of wood material surfacing, we committed to investing our own time and money, pioneering spirit and technical expertise, plus a relentless drive for improvement to raise the level of enjoyment and safety for millions of children at play.**

**By having no outside equity ownership, we freely make long-term decisions based on value to customers, not short-sighted decisions based on desires of shareholders.**

Zeager is a third-generation family-owned and operated business. Paul Zeager operated a sawmill in Southcentral Pennsylvania. His son, Charles, evolved the business to include producing and selling wood mulches for a variety of applications. He also expanded the company by establishing relationships with producers in other parts of the country where production of Zeager products became a major part of their operations. With four family members now managing the business and Charles' son Bob as president, Zeager still relies on those relationships as well as many others to produce consistent specs and quality EWF for applications throughout North & Central America.

### ZEAGER AT-A-GLANCE

- Third-generation family-owned and operated business
- Developed the original Engineered Wood Fiber (EWF) product
- First to manufacture Engineered Wood Fiber for surfacing applications
- Network of more than 50 processing facilities throughout North America to keep production "local"
- Certified metal-free EWF
- First to meet accessibility standards that are now commonplace in the industry
- Developed the first "no trip" impact zone & high-traffic wear mat for over wood chip and EWF materials
- Products are IPEMA certified for safety and comply to ASTM standards for ADA
- Every rep is NPSI-trained in playground safety

**EWF has become the most affordable playground safety surfacing solution and an industry standard. And it was done because of Zeager's passion, talents, significant investment and determination to help all.**





**SYSTEM DISCOUNTS AVAILABLE**

**ZEAGER WoodCarpet® Engineered Wood Fiber**

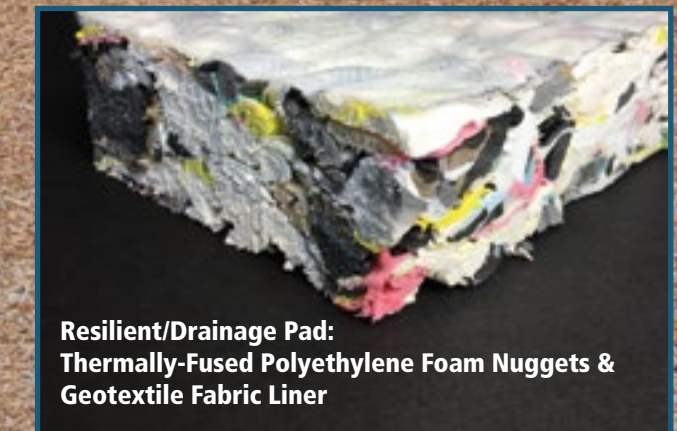
- Material:** 100% Fresh Grade Wood Fiber Composition (no chemical treatments or additives)
- Source:** Extracted, Processed & Manufactured Within Installation's Region
- Impact Rating:** IPEMA Certified for 8' (with 8" EWF) & 12' (with 12" EWF)
- Accessibility:** ADA Compliant (with proper installation & maintenance)
- Sub-Base:** Soil or Sand
- Maintenance:** Raking & Occasional Topping Off
- Warranty:** Meets ASTM F1292 for 15 Years (must be installed & maintained per Zeager specification)

**THE MOST COST-EFFICIENT SAFETY SURFACE – FROM THE INITIAL INVESTMENT THROUGH LIFECYCLE – FOR PLAYGROUNDS.**

ZEAGER WoodCarpet is made from fresh grade wood and contains no waste wood such as pallets that could contain nails, spilled chemicals, paint or wood preservatives. It's processed to high quality requirements using rigid production standards. WoodCarpet is naturally pervious and its installation specification ensures critical fall protection exceeds safety standards. It provides ADA compliancy for access and blends in with nature because it IS nature.

**100% NATURAL. PERVIOUS. SAFE. AFFORDABLE.**

Include **ZEAGER Resilient/Drainage Pad** panels under WoodCarpet for excellent vertical and horizontal drainage, critical fall protection and increased surfacing longevity. They also eliminate the need for – and expense of – construction permitting, excavating services and drainage gravel.



**Resilient/Drainage Pad: Thermally-Fused Polyethylene Foam Nuggets & Geotextile Fabric Liner**



Easily place 4' x 6' foam panels over sub-base before installing top surface.

**ZEAGER Resilient/Drainage Pad**

- Material:** 100% Thermally-Fused, Closed-Cell Polyethylene Foam & Geotextile Fabric Liner
- Impact Rating:** IPEMA Certified for 12' with 10" EWF over Pad
- Sub-Base:** Soil, Sand or Asphalt (asphalt requires 12" of WoodCarpet and WoodCarpet Mats)
- Maintenance:** No Maintenance Required
- Warranty:** WoodCarpet with Pad meets ASTM F1292 for 20 Years (must be installed & maintained per Zeager specification)



To verify product certification, visit [www.ipema.org](http://www.ipema.org)

See pages 14-15 for including TuffMat™ resilient wear mats for your playground.



**WoodCarpet® Bonded 2**



To verify product certification, visit [www.ipema.org](http://www.ipema.org)

**NO BLOWING OR SCATTERING MATERIAL**

**ZEAGER WoodCarpet® Bonded 2 Engineered Wood Fiber**

- Material:** Combination of 100% Fresh Grade Wood Fiber & Specially Formulated Binder
- Source:** (EWF) Extracted, Processed & Manufactured Within Installation's Region
- Impact Rating:** Rated for 8' (with 8" EWF) & 10' (with 12" EWF)
- Accessibility:** ADA Compliant
- Sub-Base:** Soil or Sand
- Installation:** Zeager-Certified Installer Required
- Maintenance:** Bonded Top Surface Needs No Raking or Topping Off
- Warranty:** Meets ASTM F1292 for 3 Years (must be installed & maintained per Zeager specification)

**THE ULTIMATE PERVIOUS SURFACE FOR ACCESSIBILITY AND LOW MAINTENANCE.**

Make your play area more accessible with this top layer of specially-formulated binder and engineered wood fiber spread and tamped over a carefully compacted ZEAGER WoodCarpet base. The bonded material forms pathways within the existing WoodCarpet surface to significantly improve playground accessibility and reduce maintenance.

**100% NATURAL. PERVIOUS. MORE ACCESSIBLE. LOWER MAINTENANCE.**



[zeager.com](http://zeager.com)

See pages 14-15 for including TuffMat™ resilient wear mats for your playground.





**WoodCarpet® Bonded 1**



**FIRM & STABLE SURFACE**

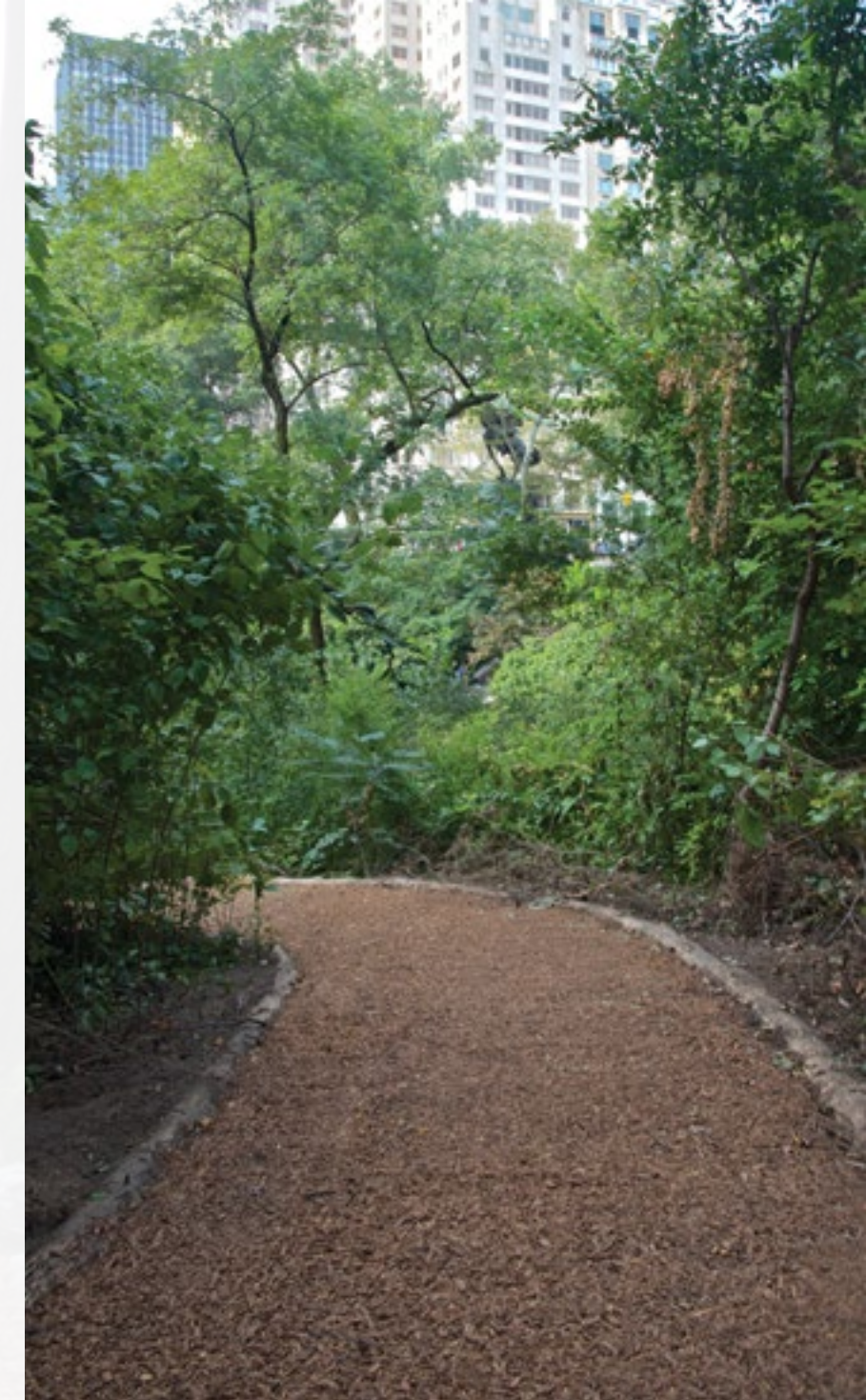
**ZEAGER WoodCarpet® Bonded 1 Engineered Wood Fiber**

- Material:** Combination of 100% Fresh Grade Wood Fiber & Specially Formulated Binder
- Source:** (EWF) Extracted, Processed & Manufactured Within Installation's Region
- Accessibility:** ADA Compliant
- Sub-Base:** Gravel
- Installation:** Zeager-Certified Installer Required
- Maintenance:** Topcoat To Extend Life
- Warranty:** 1-Year Manufacturer Warranty (must be installed & maintained per Zeager specification)

**NATURE'S BEST PERVIOUS PATHWAY AND GATHERING PLACE SURFACE THAT'S EASY TO WALK ON AND MANEUVER MOBILITY DEVICES.**

Get rid of uneven and eroding trails, paths and gathering areas that turn into muddy messes during rain. And get people off asphalt or concrete surfaces when they're supposed to be among nature. ZEAGER WoodCarpet Bonded 1 is a cost-efficient and eco-friendly solution for providing accessible opportunities to enjoy parks and natural settings. The engineered wood fibers are bonded together to form a firm and stable surface that can be spread to form any configuration.

**PERVIOUS.  
ACCESSIBLE.  
NATURAL LOOKING.  
LOW MAINTENANCE.**



[zeager.com](http://zeager.com)





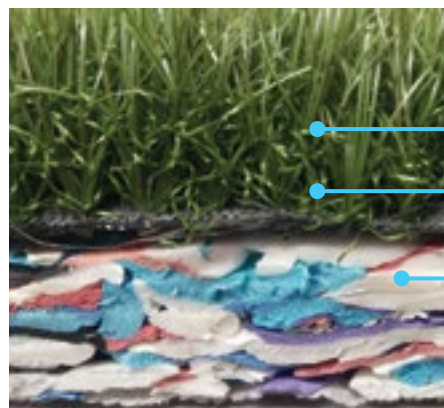
**RecBase® Synthetic Grass**



Nylon Color

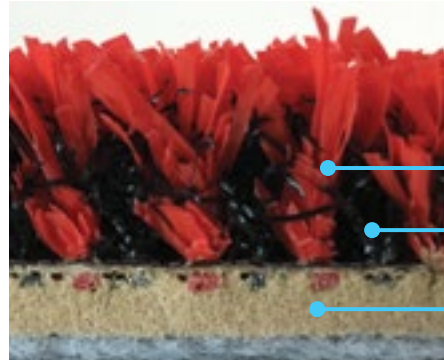


Green



**High-Pile Nylon System**

- Synthetic Grass
- Root Zone Technology
- Resilient/Drainage Pad



**Polyethylene System**

- Synthetic Grass
- Root Zone Technology
- Adhered Cushion

**ZEAGER RecBase® Synthetic Grass – Nylon**

- Material:** (Grass) Nylon Fibers with Polyurethane Backing; (Pad) 100% Thermally-Fused, Closed-Cell Polyethylene Foam & Geotextile Fabric Liner
- Sizes:** (Grass) 3/4" Low-Pile & 1-1/4" High-Pile by 15' Width and Custom Length  
(Pad) 1", 2" & 3" Thicknesses by 48"x 72"
- Impact Rating:** IPEMA Certified for 4' (1" pad), 6' (2" pad), 8' (3" pad)
- Accessibility:** ADA Compliant
- Sub-Base:** Gravel (3" required for IPEMA rating)
- Installation:** Zeager-Certified Installer Required
- Warranty:** Meets ASTM F1292 for 5 Years, 8-Year Product Warranty



To verify product certification, visit [www.ipema.org](http://www.ipema.org)

**A NATURAL-LOOKING, SAFE & SOFT PLAY SURFACE WITH NO MESSY INFILL.**

ZEAGER RecBase Synthetic Grass is available in two types: 1) 100% nylon fibers – in two pile heights – rolled out over RecBase Resilient/Drainage Pad for critical fall protection, 2) polyethylene fibers with nylon thatch fully-adhered to a cushion pad. Both have excellent wearability, abrasion resistance and resilience. Nylon system has superior durability, while polyethylene is available in a variety of colors. The special thatch fiber root zone in our high-pile systems holds fibers upright and in place under heavy use, eliminating the need for messy infill. The pervious systems can be used outdoors or indoors. Cleanup is a snap with a vacuum cleaner, leaf blower or water hose.

**NO MESSY INFILL. LOW MAINTENANCE.**

**ZEAGER RecBase® Synthetic Grass – Polyethylene**

- Material:** Polyethylene Fibers with a Nylon Thatch adhered to a 5mm Biocel Polyurethane Cushion Pad
- Sizes:** 1" Pile Height & 5mm Cushion by 15' Width and Custom Length
- Impact Rating:** See Fall Heights at Right
- Accessibility:** ADA Compliant
- Sub-Base:** Concrete or Asphalt
- Installation:** Zeager-Certified Installer Required
- Warranty:** Meets ASTM F1292 for 5 Years, 7-Year Product Warranty



Polyethylene Colors



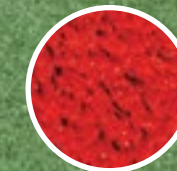
Green



Dark Blue



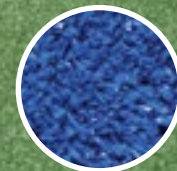
Black



Red



White



Blue

**FALL HEIGHTS:**

- Up to 30", use .75" Resilient/Drainage Pad (#RB07) under turf
- Up to 42", use 1" Resilient/Drainage Pad (#RB10) under turf
- Up to 60", use 1.5" Resilient/Drainage Pad (#RB14) under turf
- Up to 72", use 2" Resilient/Drainage Pad (#RB20) under turf



[zeager.com](http://zeager.com)



**RecBase® Indoor Carpet**



Royal Blue carpet over .75" resilient pad.

**GET THE NEEDED DURABILITY AND SAFETY WITH THE COMFORT OF A CARPET SURFACE.**

ZEAGER RecBase® Indoor Carpet is a very durable, low maintenance and reasonably priced safety carpet for indoor play areas. When rolled out over RecBase Resilient Pad, it provides fall protection. It comes in a variety of colors, cleans easily and maintains its look for years under heavy use.

**SAFE. DURABLE. COMFORTABLE. AFFORDABLE.**



Royal Blue

Purple

Red

Light Blue

Green

**ZEAGER RecBase® Indoor Carpet**

- Material:** 100% BCF Olefin Cut Pile
- Size:** 12' Wide Rolls
- Impact Rating:** 2' (.75" resilient pad over hard surface)
- Installation:** Zeager-Certified Installer Required
- Warranty:** Meets ASTM F1292 for 3 Years; 3-Year Prorated Warranty for Carpet (must be installed & maintained per Zeager specification)



[zeager.com](http://zeager.com)





**TuffMat™ Resilient Wear Mats**



Our UNIVERSAL MAT surface area measures 36" x 48" and can be used under slides, swings, play panels or at transfer platforms.



To verify product certification, visit [www.ipema.org](http://www.ipema.org)

**ZEAGER TuffMat™ Resilient Wear Mats**

- Material:** Heavy-Duty Vinyl Top Over 1" Recycled Polyethylene Foam Base
- Impact Rating:** IPEMA Certified for 12' (1" mat over 11" EWF)
- Warranty:** 5-Year Warranty (must be installed & maintained per Zeager specification)

**“NO TRIP” BENEFITS OVER LOOSE-LAID MATS**

**NO MORE UNSIGHTLY HOLES, MESSY PUDDLES OR COSTLY MAINTENANCE HEADACHES.**

Any wood fiber “kicks out” during normal use, and it’s usually at those places where high traffic occurs and impact attenuation is needed most: under and at entrance and exit points of play equipment. Eliminate that problem by installing ZEAGER TuffMat Resilient Wear Mats. Their beveled edges, unique concave shape and fastening mechanism keep mats in place and WoodCarpet underneath for required safety ratings and ADA compliance.

**THE ANSWER TO YOUR SAFETY & MAINTENANCE PROBLEMS.**



- MAT SIZES:**
- 32" x 32" Slide
  - 32" x 62" Swing
  - 36" x 48" Universal
  - 72" x 72" Tire Swing & Spinner
  - 72" x 90" Swing Bay
  - Custom Mat Sizes Available







## BETTER. NATURALLY.

For more information,  
downloadable specs,  
installation & maintenance  
guides and more, visit  
[zeager.com](http://zeager.com)

Ask us your questions or  
get a free quote!

800-346-8524  
[info@zeager.com](mailto:info@zeager.com)

Zeager offers products for these  
applications:

- Recreation Surfacing



- Equine Footing & Animal Bedding



Purchase Zeager products through one  
of these buying programs:

